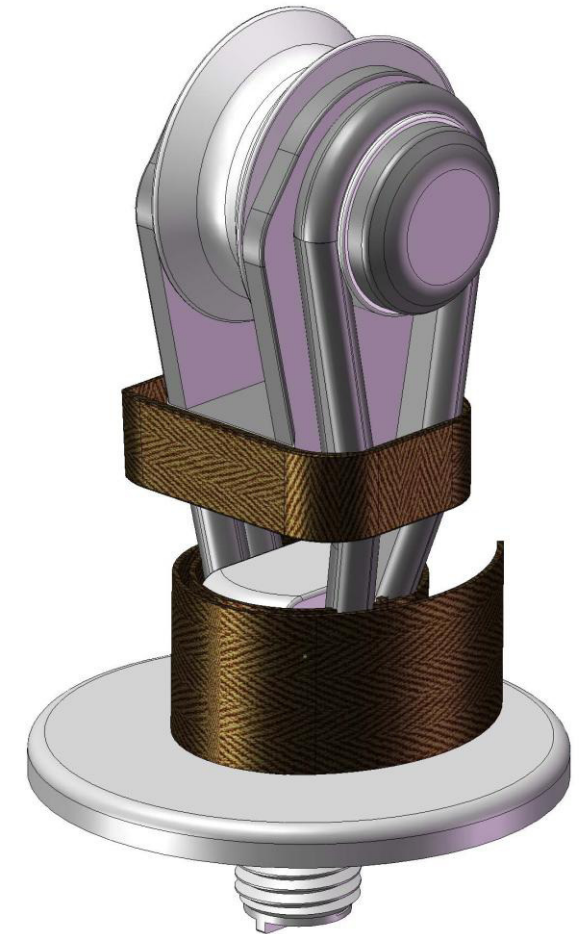




# Equiplite™ Mast base Blocks



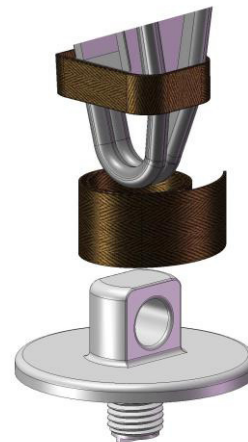
Use Equiplite™ Snatch Blocks in combination with soft deck loops to create an Equiplite mast base block system, that will achieve a weight saving of at least 85%. More information on the deck loops see deck loop data sheet.



## Up Stand System™

The up stand system™ is especially designed for Equiplite™ mast base blocks, and really interesting for the main sheet blocks | runner blocks | lead runner blocks | spinnaker blocks | tack line blocks.

Equiplite™ up stand™ system can be used on either stainless or soft pad eyes.



Note: Matching parts should be rounded, smooth, and with no sharp edges or burrs.

Dyneema loops are coated with an UV coating, recoat when worn for long life. It is recommended that loops should be replaced when worn.

All prices are retail prices in Euro.

All data approx and subject to change without notice.

Other sizes available on special order.

Unspecified dims. mm.  
Break load approx. 2 x SWL.

**MB: Mast base blocks**

**Other throats available**

Part	Sheave Ø	Max. Line (mm.)	Throat (mm.)	SWL (Kg.)	Weight (Gm.)
35-95-12 MB-HL	95	26	45	15.000	1.150
25-78-10 MB-HL	78	25	43	9.000	585
20-65-8 MB-HL	65	20	33	7.000	385
16-46-6 MB-HL	47	16	23	4.000	158
14-40-5 MB-HL	40	13	18	3.000	97
12-30-4 MB-HL	30,5	11	15	2.300	48