



Swivelling (S) | Quick Connectors

Weight at the mast top is one of the biggest drawbacks to yacht performance.

Equiplite™ Swivel Quick Connector use hi tensile alloy body with DSK 75 ULTRA loops to take the load together. They are designed for halyards, using a compact design with less windage, quick and easy to operate compared to competitive Swivels, of the same load. Even with cold & wet hands. This allows the swivel quick connector to be much lighter(at least 80% for the same load compared to traditional stainless fittings assemblies of the same load).



High-strength material— low friction, impact resistant

The swivel quick connectors use high-strength Hardkote – anodized high tensile aluminium body.

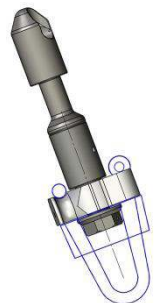
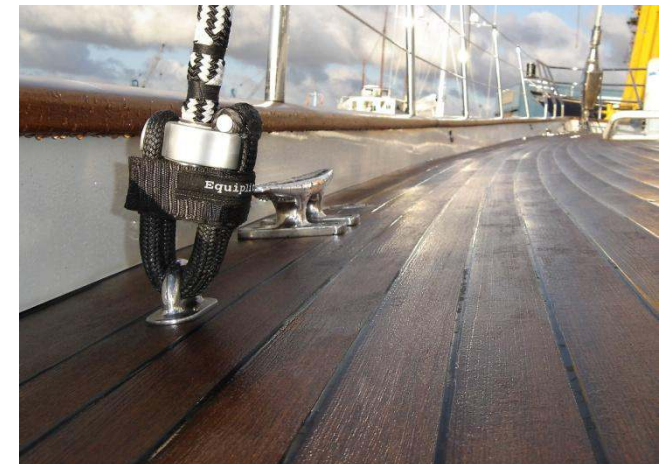
With high load polymer bearing technology for easy rotation. The swivels have unmatched impact and wear resistance.

Reduced damage to the rig, safe and will not jam if overload.

Our compact swivel quick connector with velcro wrap protection reduces damage to the Rig. Safer: light weight reduces risk of injury when flogging, reduced damage to mast, spinnaker tracks, topsides etc. Will not jam even if overloaded, will operate close to break load. And will not fatigue and fail prematurely compared to stainless.

Swivel quick connectors are used on cruising and top competitive boats for:

Mast top halyards | **Jib | Genoa | Staysail halyards**
Tack fittings | **Genakker sheets**



Two in one system

The lock system can be build in to the swivel connector. Which makes the system as compact as possible, for MAX. luff length and sail performance.



Note: Matching parts should be rounded, smooth, and with no sharp edges or burrs.
 Dyneema loops are coated with an UV coating, recoat when worn for long life. It is recommended that loops should be replaced when worn.

All prices are retail prices in Euro.
All data approx and subject to change without notice.
Other sizes available on special order.

Unspecified dims. mm.
Break load approx. 2 x SWL.

Part	Max. line (mm.)	Throat (mm.)	SWL (Kg.)	Wt. (Gm.)
24-12S-SL	35	70	15.000	710
22-12S-SL	22	60	15.000	699
20-12S-SL	20	50	15.000	540
20-10S-SL	20	45	10.000	500
18-10S-SL	18	45	10.000	424
16-10S-SL	16	45	10.000	344
16-08S-SL	16	40	7.000	300
All swivels above are custom build				
14-10S-SL	14	45	10.000	280
14-08S-SL	14	40	7.000	213
12-06S-SL	12	30	5.000	160
10-05S-SL	10	25	3.500	65
8-04S-SL	8	20	2.500	34
6-03S-SL	6	15	1.400	16